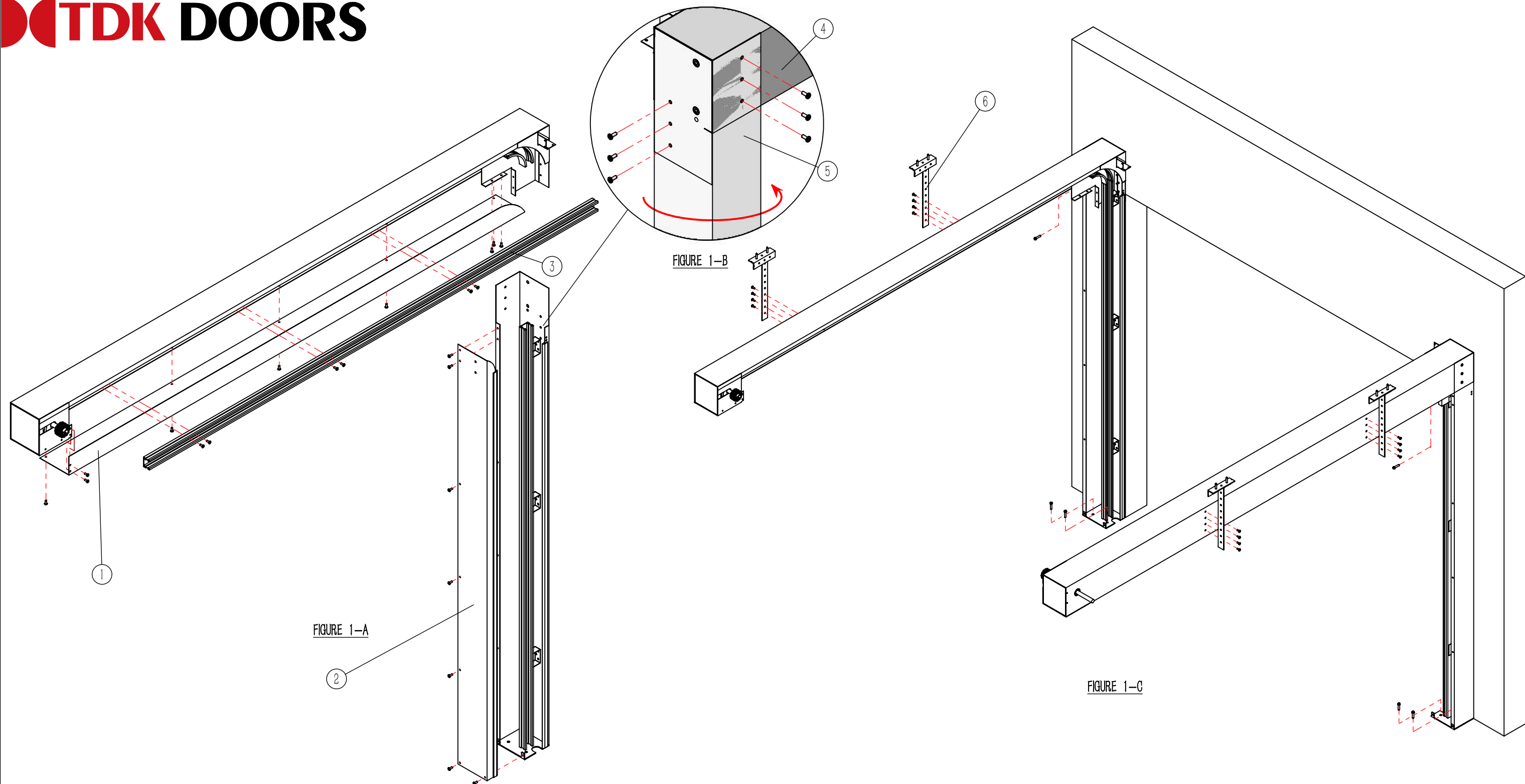


# SPIRAL LP (PARKING STRUCTURE) INSTALLATION MANUAL



## STEP 1: INSTALL BEAM AND COLUMNS

- \* FIRST, REMOVE THE COLUMN SIDE PLATE (COMPONENT ①), BEAM SIDE PLATE (COMPONENT ②), AND BEAM TRACK (COMPONENT ③) (SEE FIGURE 1-A). THEN, CONNECT AND SECURE THE BEAM TO THE COLUMN (SEE FIGURE 1-B).
- \* USE A FORKLIFT/SCAFFOLDING OR OTHER EQUIPMENT TO POSITION THE CONNECTED BEAM (COMPONENT ④) AND COLUMN (COMPONENT ⑤) AGAINST BOTH SIDES OF THE DOOR OPENING. DRILL HOLES AT THE TOP AND BOTTOM OF THE COLUMN AND SECURE THEM WITH CORRESPONDING BOLTS (SEE FIGURE 1-C).
- \* INSTALL THE TOP CONNECTING ANGLE IRON (COMPONENT ⑥) AT THE CORRESPONDING POSITION ON THE BEAM AND CONNECT AND SECURE IT TO THE CEILING (SEE FIGURE 1-D).

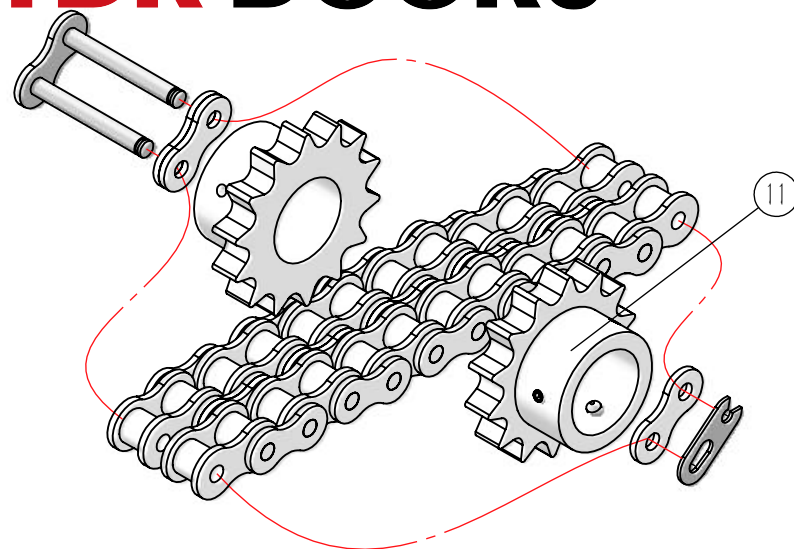


FIGURE 2-C

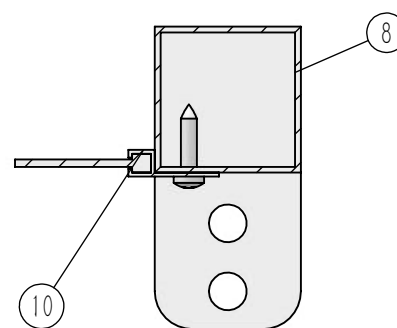


FIGURE 2-B

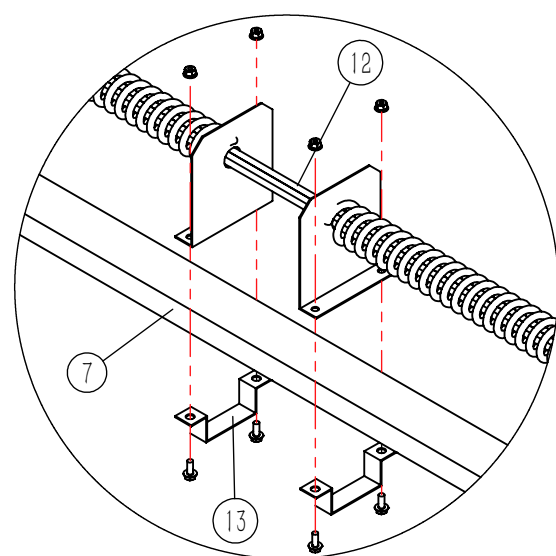


FIGURE 2-D

THE BLUE FLANGE  
ON SIDE B

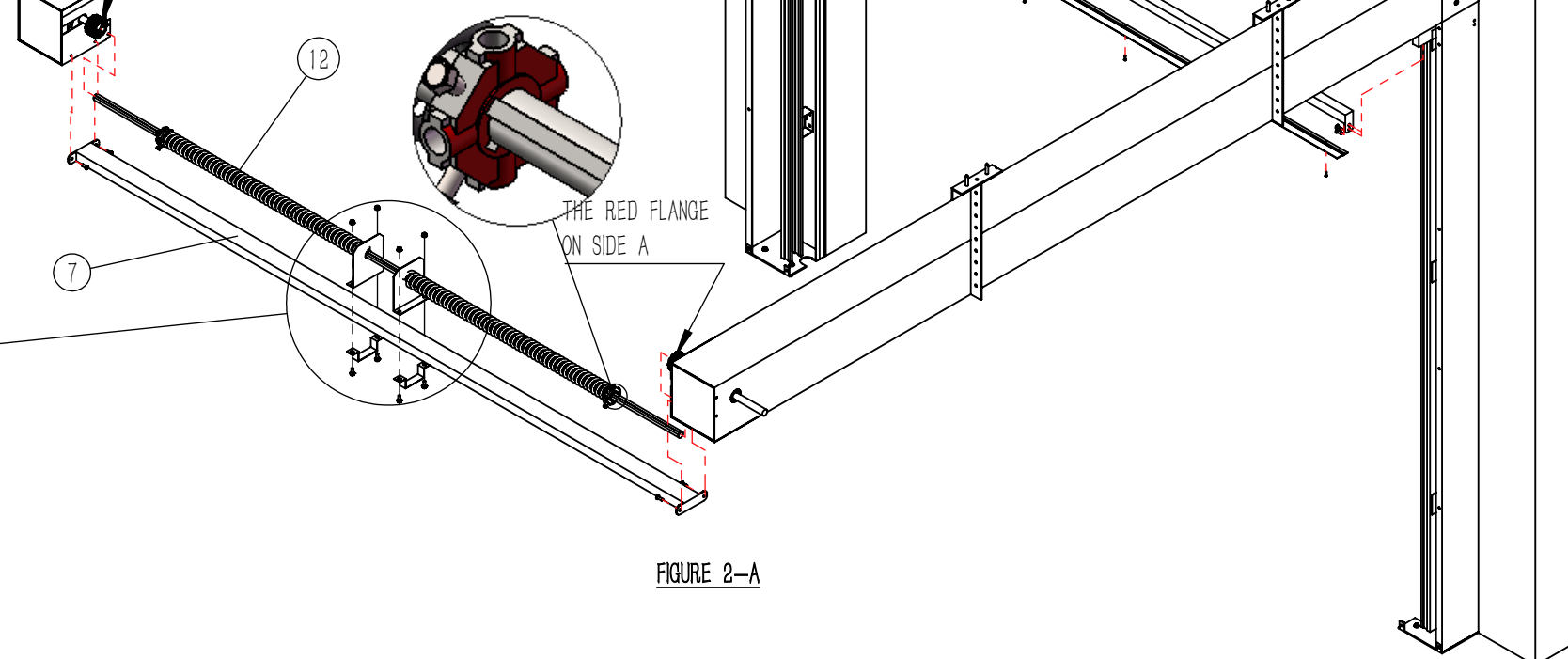


FIGURE 2-A

THE RED FLANGE  
ON SIDE A

## STEP 2. INSTALL CONNECTING BEAM AND DRIVE MAIN SHAFT

- \* INSTALL AND SECURE THE FLAT TUBE CONNECTING BEAM (COMPONENT ⑦), SQUARE TUBE CONNECTING BEAM (COMPONENT ⑧), AND L-SHAPED CONNECTING BEAM (COMPONENT ⑨) AT THE POSITIONS SHOWN IN THE DIAGRAM (SEE FIGURE 2-A).
- \* INSTALL THE TOP DOOR SEAL (COMPONENT ⑩) BELOW THE SQUARE TUBE CONNECTING BEAM (COMPONENT ⑧) AND SECURE IT WITH SELF-TAPPING SCREWS (SEE FIGURE 2-B).
- \* DISASSEMBLE THE COUPLING SPROCKET (COMPONENT ⑪) ON ONE SIDE OF THE BEAM (SEE FIGURE 2-C). INSERT THE DRIVE MAIN SHAFT (COMPONENT ⑫) INTO THE COUPLING SPROCKETS ON BOTH SIDES (MAKE SURE THE RED FLANGE IS ON SIDE A AND THE BLUE FLANGE IS ON SIDE B) , SECURE IT WITH KEYS (SEE FIGURE 2-C), AND FIX THE DRIVE MAIN SHAFT (COMPONENT ⑫) TO THE FLAT TUBE CONNECTING BEAM (COMPONENT ⑦) USING U-SHAPED BRACKETS (COMPONENT ⑬) (SEE FIGURE 2-D).



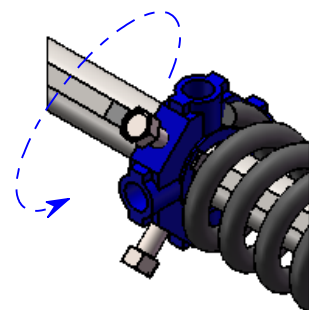


FIGURE 3-D (BLUE)

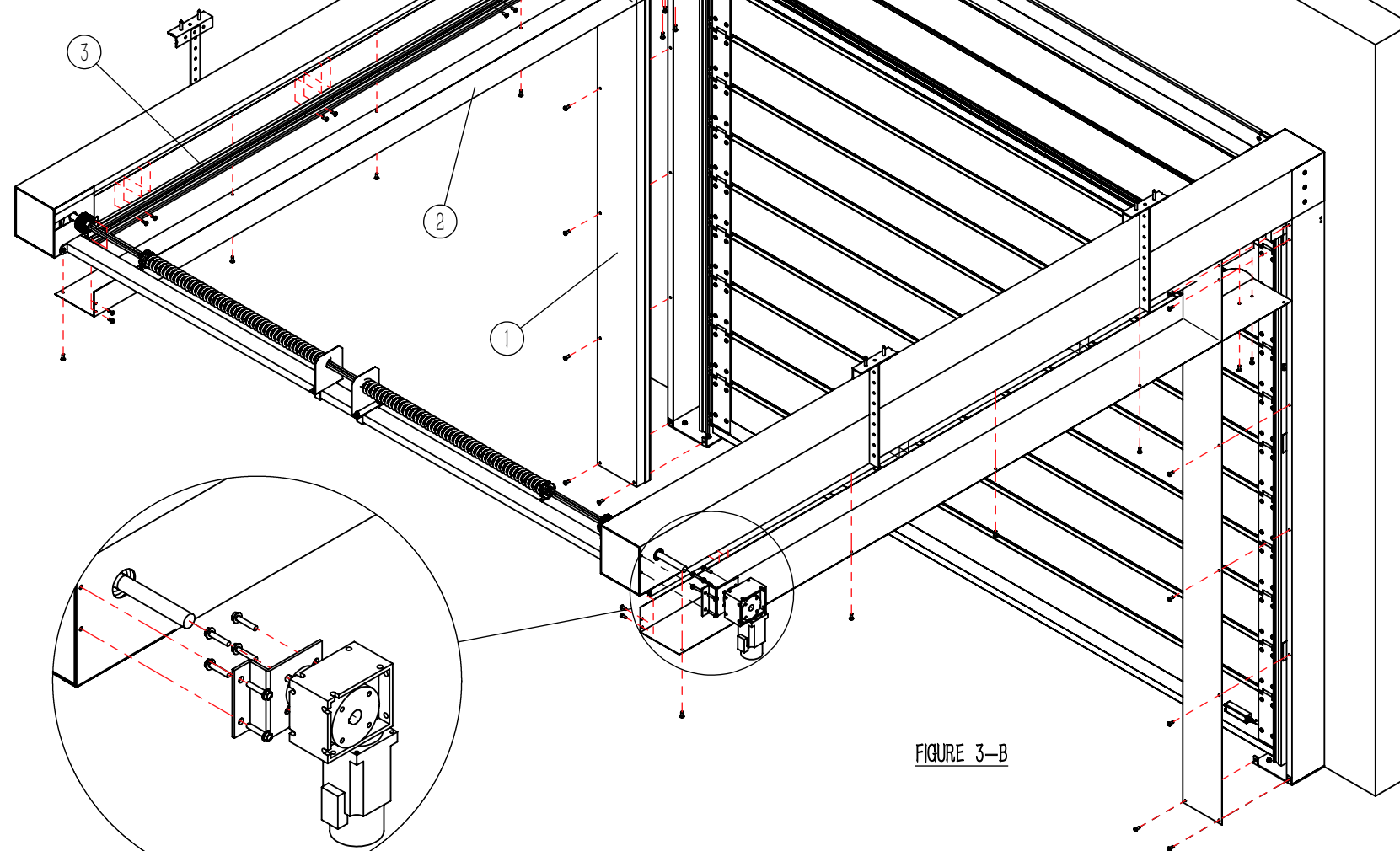


FIGURE 3-B

FIGURE 3-D

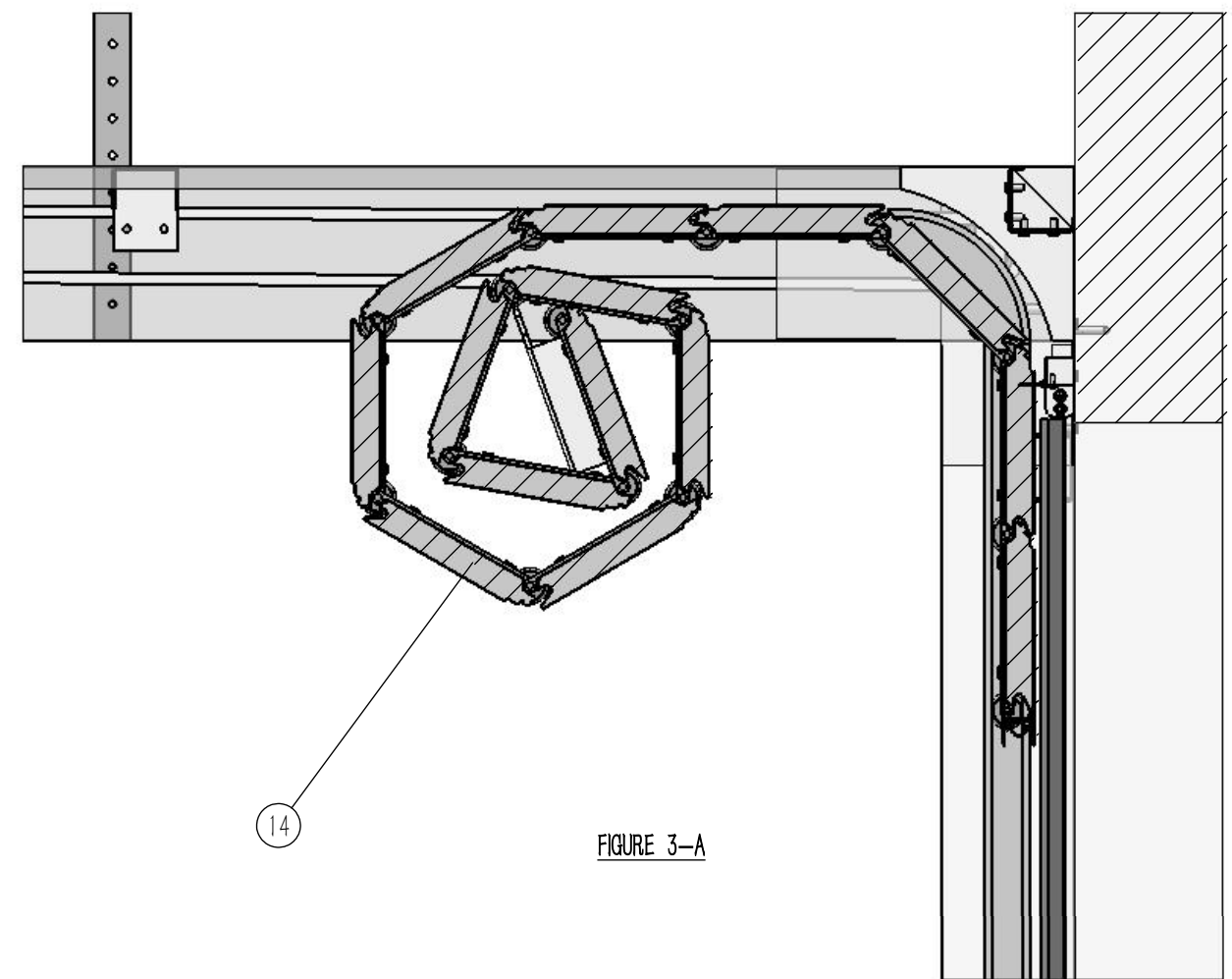


FIGURE 3-A

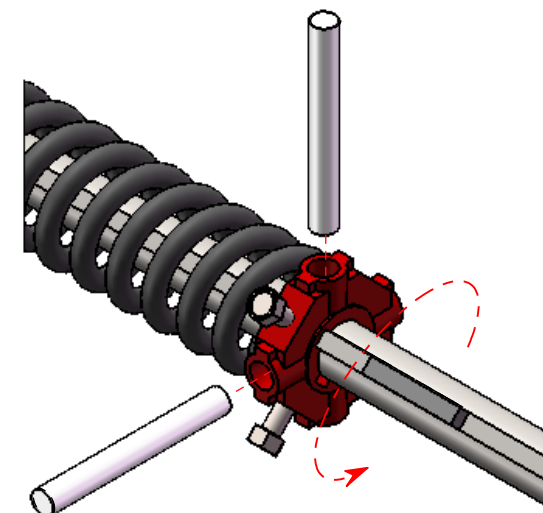


FIGURE 3-D (RED)

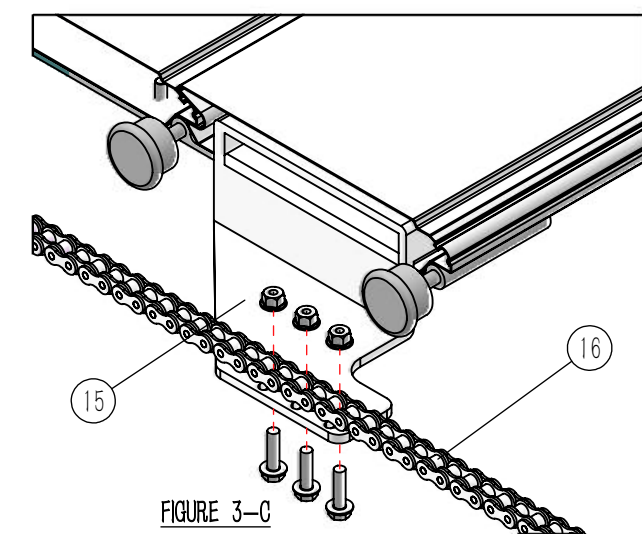


FIGURE 3-C

## STEP 3. INSTALL DOOR PANELS AND MOTOR

- \* USE EQUIPMENT SUCH AS FORKLIFTS/SCAFFOLDING TO LIFT THE DOOR PANEL (COMPONENT ⑭) TO THE CURVED TRACK, SLIDE THE DOOR PANEL INTO THE COLUMN TRACK (SEE FIGURE 3-A), AND LOWER IT TO THE LOWEST POINT.
- \* REINSTALL THE COLUMN SIDE PLATE (COMPONENT ①), BEAM SIDE PLATE (COMPONENT ②), AND BEAM TRACK (COMPONENT ③) TO THEIR ORIGINAL POSITIONS (SEE FIGURE 3-B).
- \* CONNECT AND SECURE THE HINGE CONNECTING PLATES (COMPONENT ⑤) ON BOTH SIDES OF THE TOP DOOR PANEL (COMPONENT ⑭) TO THE HINGES (COMPONENT ⑥) (SEE FIGURE 3-C).
- \* ADJUST THE SPRING ADJUSTMENT FLANGE ACCORDING TO THE INDICATED NUMBER OF TURNS—THE RED ONE MUST BE ROTATED COUNTERCLOCKWISE, AND THE BLUE ONE CLOCKWISE. INSERT THE KEY AND TIGHTEN THE BOLTS TO SECURE (SEE FIGURE 3-D).
- \* FIRST, FIX THE MOTOR TO THE MOTOR BRACKET, THEN INSERT THE ENTIRE ASSEMBLY INTO THE SHAFT, AND SECURE THE MOTOR BRACKET TO THE RESERVED HOLES ON THE BEAM (SEE FIGURE 3-E).
- \* FOLLOW THE INSTRUCTIONS ON THE MOTOR CONTROL BOX TO COMPLETE THE OPENING AND CLOSING CONFIGURATION.